

ClickClack®

Now that
you've got me...
here's how
to use me.

Stick Mixer Instruction Book

CSM001SS

VARIABLE
SPEED
DIAL

TURBO
MODE

DETACHES
FOR EASY
CLEANING

SOFT
GRIP
HANDLE

For household use only.
Save these instructions.

FIRSTLY, LET'S STAY SAFE

So I can keep blending
to your high standards,
read these safety
instructions before using
me. And why not keep
them somewhere handy?



Important safeguards

READ ALL INSTRUCTIONS BEFORE USE

WARNING: Please ensure all safety instructions are followed carefully. Failure to follow instructions could result in personal injury or property damage.

1. Protective cover fitted on power plug may present as a choking hazard to young children. Remove and discard all packaging before initial use.
2. Use the appliance only for its intended purpose. The appliance is only for domestic use, so read all instructions thoroughly before use.
3. To protect against the risk of electric shock, do not immerse the blender body, power cord or plug in water or any other liquid. Do not handle with wet hands.
4. This appliance should not be used by children and care should be taken when used near children. Children should be supervised to ensure that they do not play with the appliance.
5. This appliance is not intended for use by persons with reduced physical, sensory or mental capabilities or lack of experience and knowledge unless they have been given supervision or instruction concerning use of the appliance by a person responsible for their safety to avoid a hazard.
6. Turn OFF the appliance and unplug from the power outlet when not in use. Turn OFF the appliance and unplug from the power outlet before: approaching moving parts, assembling or disassembling parts, cleaning, leaving unattended, or storing. To unplug, grasp the power plug and pull from the power outlet. Never pull from the power cord. This appliance is not intended to be operated with an external switching device such as a timer.
7. To avoid injury, do not touch any moving parts.
8. Do not operate the appliance with a damaged power cord or plug, or if the appliance malfunctions, or if dropped or damaged in any manner. If damage is suspected, contact ClickClick by email or phone. In order to avoid a hazard, repairs and part replacements must be made by a ClickClick authorised service agent only.
9. Keep the appliance away from hot surfaces. Do not use the appliance while heating or cooking on the stove top. Do not use with boiling liquids. Allow hot food and liquid to cool slightly before blending.
10. When mixing liquids, particularly if hot, use a tall container or make smaller quantities at a time to reduce spillage.
11. Do not let the power cord hang over the edge of a table or bench or touch any hot surfaces including the stove.
12. Be careful blending hot liquid as it can be ejected out of the appliance due to a sudden steaming.
13. Do not use attachments that are not approved or sold by the appliance manufacturer.
14. Do not use outdoors or in damp areas.
15. Blades are very sharp. Use extreme care when handling the blending shaft and during cleaning. Always keep out of reach of children.
16. Keep hands, hair, clothing, and other utensils away from the appliance during operation to reduce the risk of personal injury and/or damage to the appliance. A scraper may be used but only when the appliance is not running.
17. Potential injury from misuse.
18. Do not operate this appliance continuously for more than one minute. After one minute of use, unplug and let the unit rest until it cools down before using again.

Specifications

Model: CSM001SS

Rating: 220-240V~ 50-60Hz 800W

Now it's time to get to know my parts

1. TURBO button
2. START button
3. Blender body
4. Blending shaft (detachable)
5. Speed dial
6. Blades



Cleaning

CAUTION – BEFORE YOU GET STARTED:

- **Blades are very sharp. Use extreme care when handling the blending shaft during cleaning.**
- **Always ensure the appliance is turned OFF and unplugged from the power outlet before cleaning.**
- **Do not immerse the blender body, power cord or plug in water or any other liquid!**
- **Do not wash any parts in the dishwasher.**
- **Do not use harsh or abrasive cleaning agents or solvents.**

Before using for the first time, as well as after each use, clean the appliance as follows:

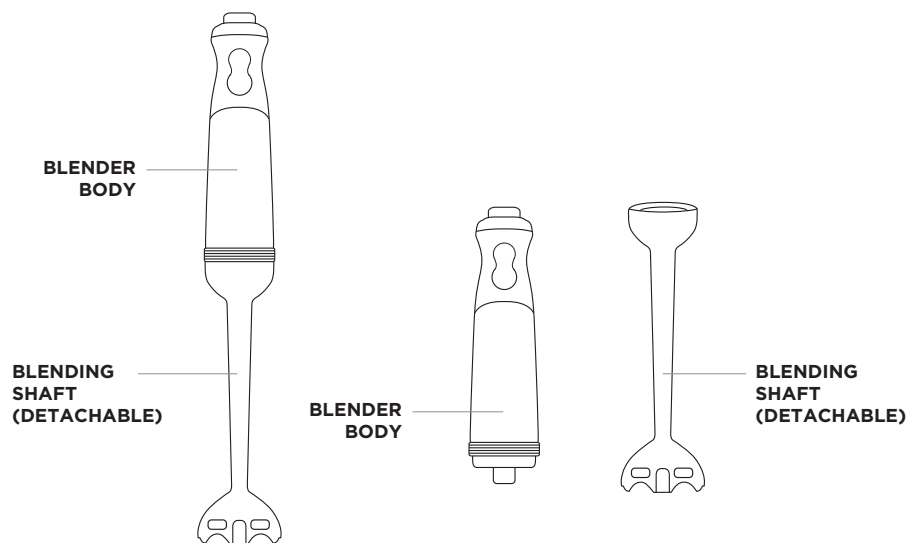
Always ensure the appliance is turned OFF and unplugged from the power outlet before cleaning.

Blender body:

Wipe the exterior surface of the blender body with a damp cloth and dry thoroughly. Never immerse in water or any other liquid.

Blending shaft (detachable):

Detach the blending shaft from the blender body by turning it clockwise. Then wash the blending shaft under running water. Ensure that no liquid enters the hollow shaft. Then dry thoroughly.



Usage Instructions

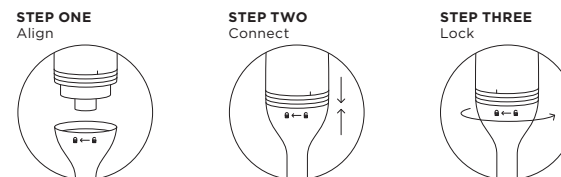
Clean before initial use – refer to cleaning instructions on page 4.

CAUTION:

- **Always ensure the appliance is turned OFF and unplugged from the power outlet before attaching or detaching the blending shaft. Do not plug the appliance into the power outlet until it is fully assembled.**
- **Never immerse the blender body in food or liquid. (See diagram on page 4).**
- **Blades are very sharp. Use extreme care when handling the blending shaft.**
- **Always release the START or TURBO button and wait for the blades to come to a complete stop before removing the appliance from ingredients.**
- **Do not operate this appliance continuously for more than one minute. After one minute of use, unplug and let the unit rest until it cools down before using again.**
- **Not suitable for use in non-stick cookware.**

Let's get blending!

1. Attach the blending shaft to the blender body and turn anti-clockwise until the blending shaft clicks and locks into place. Use the icons on the blending shaft and the line on the blender body as a guide. Be certain the blending shaft is securely locked in place.



2. Place your food and/or liquid into a container that is tall enough to avoid splashes or spills. Ensure the container is placed on a flat, dry surface.
3. Plug the appliance into the power outlet.
4. Carefully immerse the blending shaft, so the ingredients in the container cover the blades. Never immerse the blender body in food or liquid. Select the speed. Then press and hold the START button to begin blending. (Always immerse the blending shaft first to avoid splashes!). The processing speed is set with the speed dial. The higher the setting, the faster the blending results.
5. Work through the ingredients with a gentle up and down movement of the appliance. You can get the maximum processing speed by holding the TURBO button instead of START. You can also use the TURBO button for instant, powerful pulses without having to use the speed dial.
6. To turn OFF the appliance, release the START or TURBO button and wait for blades to come to a complete stop.
7. Remove the appliance from the container and unplug from the power outlet. Then detach the blending shaft from the blender body by turning clockwise.
8. Done! Refer to cleaning instructions to get your appliance looking spick and span.

Operating time

Food	Operating time	Speed
200g apple + 300g water (apple cut into 2-3cm pieces)	10 seconds	Turbo

Do not operate this appliance continuously for more than one minute. After one minute of use, unplug and let the unit rest until it cools down before using again.

Notes:

[illegible]

ClickClack® Stick Mixer Warranty

Innova Products Limited guarantees that its ClickClack® Stick Mixer will be free from defect or damage due to faulty or defective materials, workmanship or manufacturing for 24 months from the date of purchase. If your product is unsatisfactory due to faulty or defective materials, workmanship or manufacturing, please call our customer service centre. In order to make a claim under our warranty, you must have original proof of purchase. The product will be replaced free of charge.

HOW TO MAKE A CLAIM? On discovery of defect or damage due to faulty or defective materials within 24 months from the date of purchase, please immediately stop using the product, and call our customer service centre with original proof of purchase and it will be replaced free of charge. If replacement is not possible, a full refund will be provided.

CONDITIONS AND LIMITATIONS: This guarantee does not extend to fair wear and tear in the ordinary course of use. This guarantee does not cover damage caused by commercial use, or other misuse or mishandling, including but not limited to water damage. In the case of any dispute over the cause of damage, please in the first instance contact our customer service Centre on 0800 100 345.

If your product is out-of-warranty but requires repair or service, stop use immediately and contact Customer Service for advice.

Our goods also come with other warranties that cannot be excluded under applicable consumer law. For example, you may be entitled to replacement, refund or repair, depending on the applicable consumer law and the nature of the failure complained of. Some territories do not allow certain exclusions or limitations of warranty, so the above exclusions or limitations may not apply to you. This express manufacturer guarantee gives you specific rights, but you may also have other rights that vary by territory and state.

HOW TO CONTACT US?

Phone: **0800 100 345**. Email: nzinfo@innovaproductsltd.com.

REGISTER WARRANTY ONLINE: It will only take a couple of minutes to register your warranty online and you will have added peace of mind knowing your purchase is recorded and your warranty will be available if called upon.

Go to www.clickclack.com “Register your product” in the homepage footer and follow the prompts.

322 Neilson Street, Onehunga, Auckland, New Zealand.

www.clickclack.com

Innova Products Limited

322 Neilson Street, Onehunga,
Auckland, New Zealand.

Phone: 0800 100 345

Email: nzinfo@innovaproductsltd.com